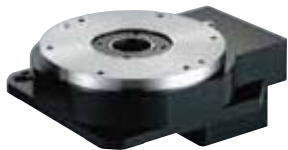


中空軸旋轉平台 Hollow Rotary Actuators



質量:11.5kg

MD 200 R - 10 - V2

↓

旋轉平台系列

↓

規格

↓

R: 直角轉向減速
P: 直向減速

↓

減速比

↓

V1: 伺服Ø19 PCD90,M5
V2: 伺服Ø19 PCD90,M6

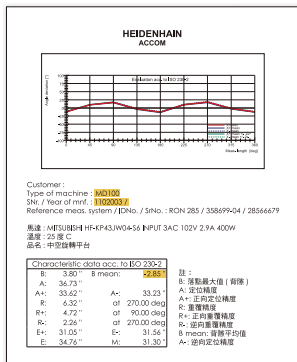
↓

馬達類型

各廠牌750W AC 伺服馬達

各廠牌86型步進馬達

定位精度檢測



產品型號	MD200	MD200R	MD200P
旋轉平台軸承	圓錐滾子軸承		
容許轉矩N.m	80		
精度壽命	20000 Hrs		
允許轉速rpm	200 (盤面)		
減速比	10, 30	20, 30	30, 40, 50
重覆精度arc-sec	≤ 10	≤ 20	≤ 60
定位精度arc-min	≤ 1	≤ 1	≤ 2
旋轉平台平行度mm	≤ 0.02		
旋轉平台同心度mm	≤ 0.015		
保護等級	IP40		

P.S:圓周單位: 1 rpm = 360° 1°=60'(arc-min) 1'=60"(arc-sec)
 圓周誤差換算直線誤差: 盤面直徑x 3.14159 ÷ (360°x60'x60") x背隙值

盤面同心度檢測

≤0.015mm

盤面旋轉振幅

≤0.005mm

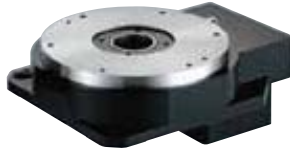
盤面與底座平行度

≤0.02mm

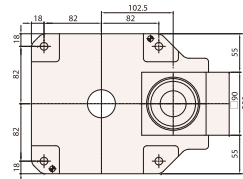
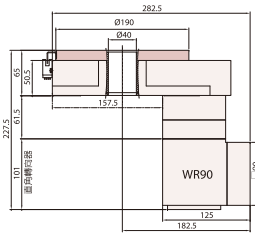
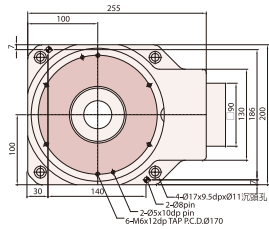
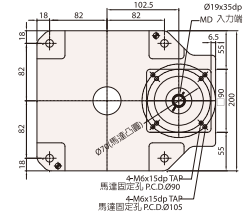
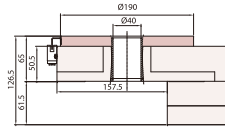
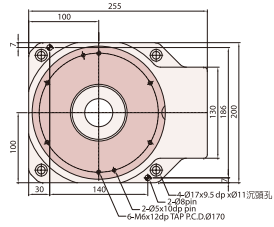
外徑任意點定位精度
半徑 100mm
≤ 1min

反覆定位精度
半徑 100mm
≤ 10sec

半徑懸臂300mm
 施力重力15kg時,
 測得MD200外緣
 ≤0.01mm



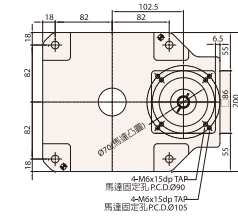
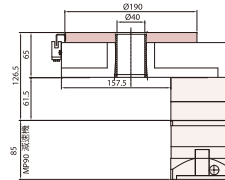
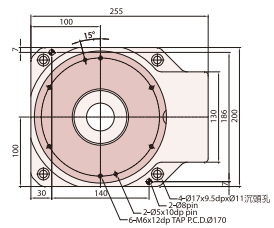
MD200



MD200R



MD200P



訂購時請提供馬達法蘭尺寸
P.S:原點Sensor規格 (選配) OMRON EE-SX672