

中空軸旋轉平台 Hollow Rotary Actuators



質量:16kg

MD

旋轉平台系列

275

規格

R

選配

R:直角轉向減速
P:直向減速

- 10

減速比

V2

馬達類型

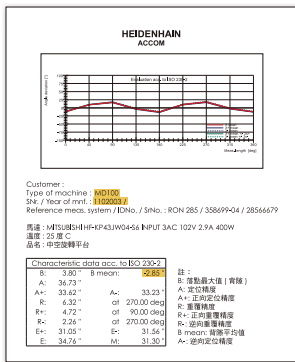
V1: 伺服Ø19 PCD90,M5
V2: 伺服Ø19 PCD90,M6

T1: 步進Ø14 PCD98.4,M5

各廠牌750W AC 伺服馬達

各廠牌86型步進馬達

定位精度檢測



產品型號	MD275	MD275R	MD275P
旋轉平台軸承	圓錐滾子軸承		
容許轉矩N.m	80		
精度壽命	20000 Hrs		
允許轉速rpm	200 (額面)		
減速比	10	20,30	30,40,50
重環精度arc-sec	≤ 10	≤ 20	≤ 60
定位精度arc-min	≤ 1	≤ 1	≤ 2
旋轉平台平行度mm	≤ 0.02		
旋轉平台同心度mm	≤ 0.015		
保護等級	IP40		

P.S:圓周單位: 1 rpm = 360° 1°=60'(arc-min) 1'=60"(arc-sec)
圓周誤差換算直線誤差: 盤面直徑x 3.14159 ÷ (360°x60"x60") x 背隙值

盤面同心度檢測

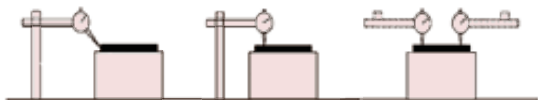
≤0.015mm

盤面旋轉振幅

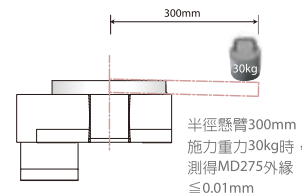
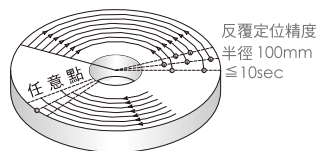
≤0.005mm

盤面與底座平行度

≤0.02mm

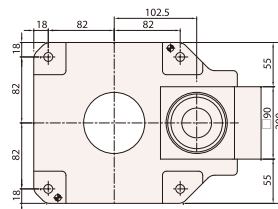
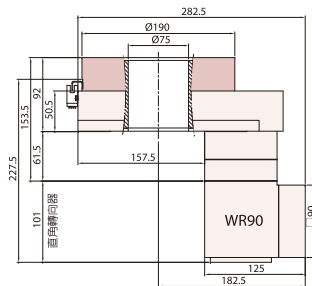
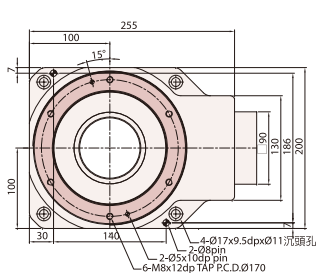
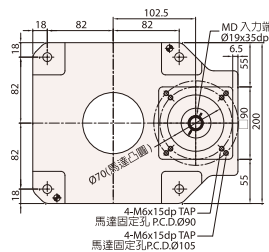
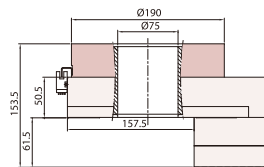
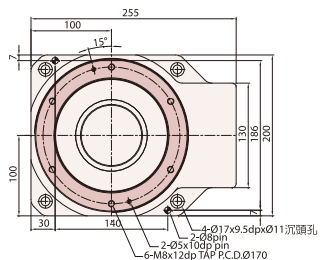


外徑任意點定位精度
半徑 100mm
≤ 1min





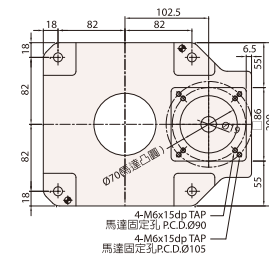
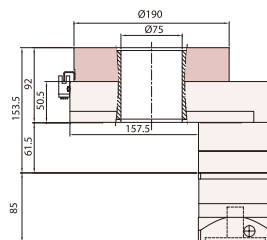
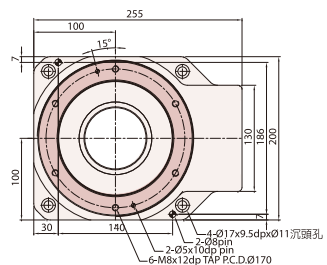
MD275



MD275R



MD275P



訂購時請提供馬達法蘭尺寸
P.S:原點Sensor規格 (選配) OMRON EE-SX672