

中空軸旋轉平台 Hollow Rotary Actuators



質量:2.5kg

MD
↓
旋轉平台系列

100
↓
規格

R
↓
選配

8
↓
減速比

V2
↓
馬達類型

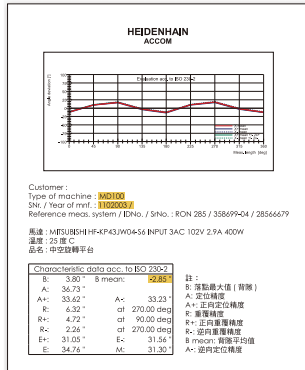
R: 直角轉向減速
P: 直向減速

V1: 伺服Ø14 PCD70,M4
V2: 伺服Ø14 PCD70,M5

T1: 步進Ø8 PCD66,67,M4
T2: 步進Ø8 PCD70,M4
T3: 步進Ø10 PCD70,M4

各廠牌200~400W AC 伺服馬達 各廠牌60型步進馬達

定位精度檢測



產品型號	MD100	MD100R	MD100P
旋轉平台軸承		圓錐滾子軸承	
容許轉矩N.m		45	
精度壽命		20000 Hrs	
允許轉速rpm		200 (盤面)	
減速比	8	16,24	24,32,40
重覆精度arc-sec	≤ 10	≤ 20	≤ 60
定位精度arc-min	≤ 1	≤ 1	≤ 2
旋轉平台平行度mm		≤ 0.02	
旋轉平台同心度mm		≤ 0.015	
保護等級		IP40	

P.S:圓周單位: 1 rpm = 360° 1°=60'(arc-min) 1'=60"(arc-sec)
圓周誤差換算直線誤差: 盤面直徑x 3.14159 ÷ (360°x60'x60") x 背隙值

盤面同心度檢測

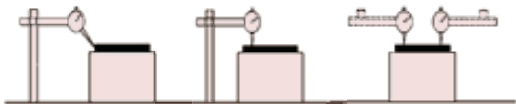
≤0.015mm

盤面旋轉振幅

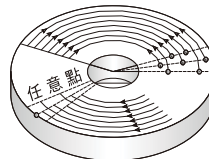
≤0.005mm

盤面與底座平行度

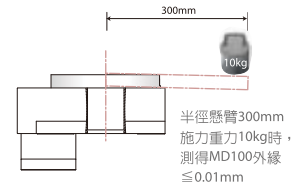
≤0.02mm



外徑任意點定位精度
半徑 50mm
≤ 1min

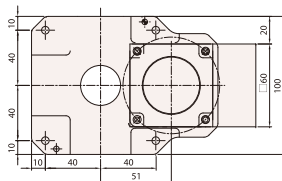
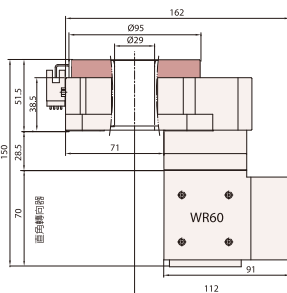
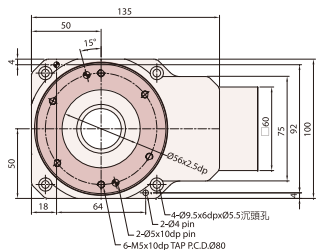
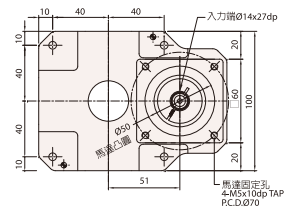
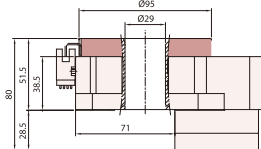
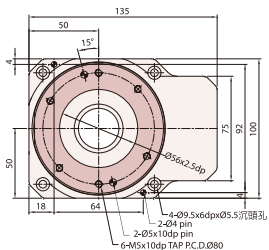


反覆定位精度
半徑 50mm
≤ 10sec





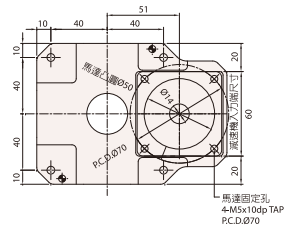
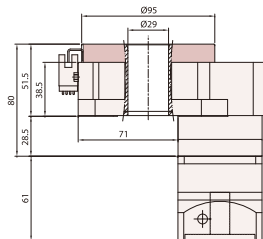
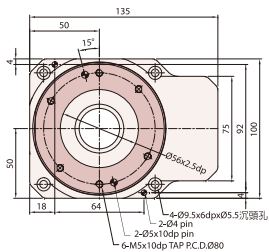
MD100



MD100R



MD100P



訂購時請提供馬達法蘭尺寸
P.S:原點Sensor規格 (選配) OMRON EE-SX672